

MS3-MaxiMix25 / Vortex Mixer MS3-MaxiMix30D / Vortex Mixer Digital

Vortex Mixer is used for vibration, blend and stirring of sample tissue, cell, bacteria liquid and chemical reagent in life science and physical and chemical analysis field. Multiple tubes are suitable for 0.2-50ml microtubes and tubes or small container with its diameter is within 108mm.

Compact appearance, powerful function, sucker type under chassis, super shockproof, ideal for high speed operation.

Multiple mixing modes, touch operation, continuous operation and timing set (MS3-MaxiMix30D).

Speed adjustable, and wide speed range, stable low speed, powerful high speed.

Various tube holders are for optional (Suitable for microtubes, centrifuge tubes, microplates)



MS3-MaxiMix25



MS3-MaxiMix30D

Specification	MS3-MaxiMix25	MS3-MaxiMix30D
Operation	Knob + Scale	Key + Digital display
Shaking Orbit	3mm	3mm
Shaking Mode	Circle	Circle
Operation Mode	Continuous or press running	Continuous running or short mix
Speed Range	0-2500rpm	300-3000rpm
Time range	-	1s-999min
Voltage	AC 220-230V, 50/60Hz	DC 24V
Power	60W	30W
Fuse	250V, 1A, Ø5x20	-
Dimensions, WxDxH	132x156x150 mm	132x156x150 mm
Net weight	2,5 kgs	2,2 kgs

Optional Accessories



MX-A



MX-B



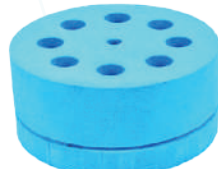
MX-C



MX-D



MX-E



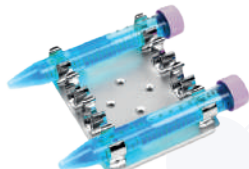
MX-F



MX-G



MX-H



MX-I



MX-J



MX-K



MX-L



MIX-A



MIX-B



MIX-C



MX-P
Standart platform



Code	Description
MX-A	Standard head. Suit for tubes and containers with dia.<30mm
MX-P	Standard platform to hold foam tube holder
MX-B	Convex pad. use with MX-P. suit for tubes and containers with dia.<99mm
MX-C	Foam tube holder. for 0.2ml tubes, 70 holes. use with MX-P
MX-D	Foam tube holder. for 0.5ml tubes, 36 holes. use with MX-P
MX-E	Foam tube holder. for 1.5/2.0ml tubes, 20 holes. use with MX-P
MX-F	Foam tube holder. for 15ml tubes, 8 holes. use with MX-P
MX-G	Foam tube holder. for 50ml tubes, 4 holes. use with MX-P
MX-H	Tube holder platform. for 1.5/2.0ml tubes x 22
MX-I	Tube holder platform. for 15ml tubes x 4
MX-J	Tube holder platform. for 50ml tubes x 2
MX-K	Plate holder platform. for all standard plates
MX-L	Universal platform for tube stands below(MIX-A/B/C) and all standard plates
MIX-A	96 x 0.2ml Tube Stand
MIX-B	24 x 0.5ml Tube Stand
MIX-C	24 x 1.5/2.0ml Tube Stand

The maximum speed of MX-F and MX-G must not exceed 900rpm